



**BIOCELL**  
SERIES

**CSL Product Shelf-Life Determination Chambers**

<b>MODEL 1200CSL</b> - Capacity 200 litres
<b>MODEL 1300CSL</b> - Capacity 300 litres
<b>MODEL 1400CSL</b> - Capacity 400 litres
<b>MODEL 1800CSL</b> - Capacity 800 litres
<b>MODEL 1900CSL</b> - Capacity 1000 litres

*The Contherm Biocell CSL Stability Chambers -the ideal cabinets for product shelf life determination.*



Some conditions apply\*



Model 1400CSL

For long or short term product shelf life investigations for the pharmaceutical and product packaging industries, these Contherm Biocell CSL variants feature an integral recorder, and are based on the proven Contherm Biocell Incubators. Offering accurate and reliable long-term control, with a temperature control range from 25°C to 40°C, a humidity range from 55%RH to 80%RH, and one-pass uniform air circulation system, optimum and repeatable performance is assured. All models feature a corrosion-resistant finish on steel exteriors and stainless steel interiors to enhance user-friendliness and hygiene, with a cable port fitted as standard equipment. Indirectly heated inner doors of toughened glass allow excellent visual monitoring, and a soft-closing outer door ensures jar-free protection of samples.

The proven Contherm ZP21 microprocessor-based control system with user-adjustable software and easy-to-set and read LED digital display is EEROM backed to save set points during power failures. These models feature self-diagnostic alarm displays and dual hi-limit controls. Contherm communication software with a 9-pin comms. port is an optional extra available for remote monitoring etc. (Option QSL). Contherm CSL cabinets

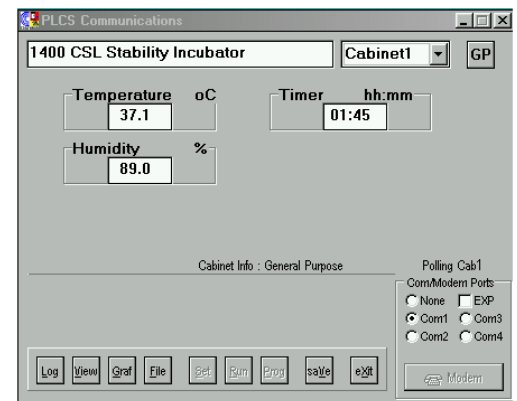
contain ozone-friendly refrigerant and oil only. Manufactured in a quality production environment, these chambers are designed to NZS/AS3100 Electrical Standards.



Close-up of recorder showing 7 day temperature and humidity digital display

**Specifications**

MODEL	1200CSL	1300CSL	1400CSL	1800CSL	1900CSL
Nominal Capacity	200 litres	300 litres	400 litres	800 litres	1000 litres
External Dimensions (mm)	Height	920	1210	1510	1630
	Width	870	870	870	1430
	Depth	910	910	910	1070
Internal Dimensions (mm)	Height	630	860	1180	1180
	Width	655	655	655	1220
	Depth	510	510	510	670
Shelves Supplied	3	4	5	5	5
Load: Watts	800W	800W	800W	1300W	1300W
Humidity Range	55%RH to 80%RH (±3% accuracy)				
Temperature Range	25°C to 40°C				
Operating Ambient	Maximum 35°C				
Temporal Variation	±0.2°C		±0.4°C		±0.4°C
Spatial Variation	±0.6°C		±1.0°C		±1.0°C
Power Supply	230 - 240Volt 50hz 10Amp Grounded Supply				
Controller	ZP21 Digital LED Readout				
Net Weight	83kg	91kg	113kg	135kg	280kg
Packed Weight	TBA				
Timer	1 min. to 99hrs 59mins on all programs				
Options	Option QSL - Comms. Program. Option X - Castors. (Castors standard on 1800 and 1900 models)				



PC window-Communications Software

More technical information is available from the Contherm Techspec Library. Refer to our website for current information. The words 'Contherm' and 'Biocell' are the property of Contherm Scientific Ltd. \*Warranty covers components and labour for 1 year. Full warranty applies only with regard to published pricelist. The information contained in this brochure is correct at time of printing but is subject to change without notice.